



# NATIONAL INLAND NAVIGATION INSTITUTE



***River is calling...***

**DEVELOPING HUMAN RESOURCE**

**FOR INLAND WATER TRANSPORT SECTOR**



**SHRI MANSUKH LAXMANBHAI MANDAVIYA**

**Hon'ble Minister of State (Independent Charge)**

**(Ministry of Ports, Shipping and Waterways, Govt. of India)**

**Transport Bhawan, Sansad Marg, New Delhi, 110001**



**DR. AMITA PRASAD, IAS**

**Hon'ble Chairperson of IWAI**

**(Ministry of Ports, Shipping and Waterways, Govt. of India)**

**Head Office: A-13, Sector-1, Noida 201301 (U.P)**

# INTRODUCTION

National Inland Navigation Institute (NINI) has been Setup by Inland Waterways Authority of India (IWAI) Ministry of Ports, Shipping and Waterways, Govt. of India to develop Human Resource for Inland Water Transport Sector. The Institute provides induction, up-gradation and professional development training to the manpower for manning, operating Inland vessels and to the IWAI staff for development of waterways and for repair and maintenance of vessels.

NINI provides fully residential course for trainees seeking fresh employment in the sector. The Training confirms to syllabus promulgated by the State Water Transport Department as per Inland vessel Act for obtaining respective certificate of competency. Personnel trained at NINI can work on deck and in engine room of Inland Vessels owned by Government, public and private sector depending upon their training and certification acquired by them.

The Institute arranges professional development courses on Hydrographic Surveying, Dredging, Repair and Maintenance & Operations of Inland Vessels as well as on river training.

The Institute is uniquely positioned to offer complete spectrum of training in Inland Water Transport Sector. NINI can design company specific courses tailor cut to the requirements of the organization.

The Institute is ISO 9001:2015 certified by American Bureau of Shipping an International Quality Certifying Authority.

The Institute is approved by Director General of Shipping for conduct of NCV preparatory course for NWKO (Near Coastal Voyages) certification of competency and Basic Safety Courses.

The Institute is also approved by Directorate General of Shipping to conduct Radar Observer Simulator Course (ROSC), Automatic Radar Plotting Aid (ARPA), Ship Maneuvering Simulator Course (SMS), Liquid Cargo (OIL) Handling Simulator Course (LCHS-Oil) and Electronic Chart Display and Information System Course (ECDIS).

The Institute has been awarded Grade A+ (outstanding) by Indian Register of Shipping (IRClass) under continuous Inspection program (CIP) of DG shipping.





# CAMPUS AND INFRASTRUCTURE

The Institute is situated in a serene and clean atmosphere on the bank of Ganga River near Mahatma Gandhi Setu and it is walking distance from Ashok Rajpath, the main thoroughfare. The nearest railway station Gulzarbagh is just 3Km from the Institute whereas it is 12 kilometers from Patna junction.

The main building house has air conditioned Classrooms, Smart Classrooms, Library, Conference room, Computer Laboratory, and 110 sitting capacity air conditioned Auditorium. The Institute has class sitting capacity of 160 students and academic block to house simulators and hold professional courses for 100 students.

The Hostel and Dining Hall are located at the rear of the campus. The hostel facility of the Institute can accommodate 80 trainees at a time and has sufficient room for girl students.

In addition to the indoor recreation facilities the Institute has table tennis room, volley ball court, a badminton court, cricket ground, health & fitness room, kabaddi ground, parade ground and swimming pool to provide for over all development and training of the trainees.

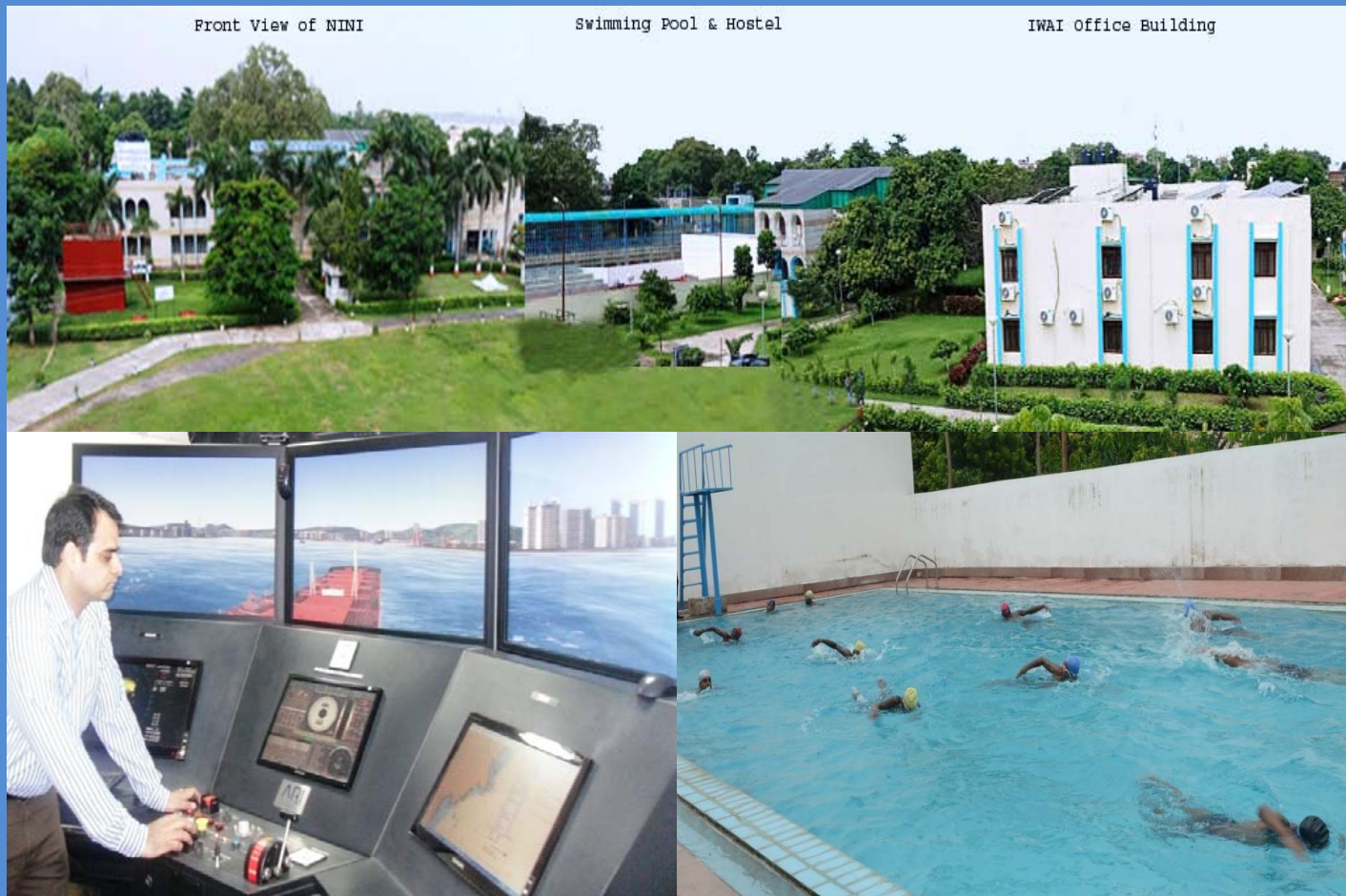
The Institute has one training vessel in the campus, an operational Inland Vessel/Dredger and FRP Boat for providing practical training to the trainees on Inland Navigation as well as dredging operations. The teaching tools used at the Institute are traditional as well as modern training tool such as Inland Vessel Navigation and Maneuvering Simulator. The Institute houses a well equipped workshop for providing training on hot work, machining, plumbing and carpentry.

The Institute houses Simulators for training on Radar, ARPA and Communication Equipment, Ship Maneuvering Simulator and Dredging Operations.

Front View of NINI

Swimming Pool & Hostel

IWAI Office Building





# MANAGEMENT OF THE INSTITUTE

The Institute is managed under the guidelines of the Inland Waterways Authority of India (Ministry of Ports, Shipping and Waterways, Govt. of India).

The Management has a unique focus on Human Resource Development as an essential component of selection, education and retention of the manpower in an IWT sector. The Management provides its rich domain expertise of behavioral sciences and productive interaction with Inland Water Transport Industry, to offer complete end to end consultancy and solutions for manpower selection, Performance Appraisals, Behavioral, Aptitude & Psychometric Testing, Professional Development, Workshops and Seminars to the Inland Water Transport sector.



DEVELOPING HUMAN RESOURCE FOR INLAND WATER TRANSPORT SECTOR



# ACADEMIC PROGRAMS AND COURSES – IWT SECTOR

## Rating Induction (IV) Course:

It is 6 months fully residential General Purpose Inland Vessel Rating Induction Course for physically and medically fit matriculate students above 17½ years of age. The intake capacity of the course is 40 students and course commences mid February and mid august each year. The course is desirable for the candidates to work as greaser or lascar on Inland Vessels operated by IWAI and subsequently rising to master first class and Inland Engineer.

## Safety Courses:

The institute offers the DG shipping Approved basic safety courses namely Elementary First Aid, proficiency in survival techniques, personal safety and social responsibility and fire to prevention and fire fighting, For inland vessel for all new entrants as well as for the present staff sailing on board inland vessels.

## Up gradation Courses:

In order to upgrade the manpower of Inland vessels to use modern equipments such as Radar, DGPS, Echo sounder etc, the Institute offers 5 days radar operation and collision avoidance course for Inland Vessel and 5 days Navigation Equipment Course.

## Preparatory Courses:

The Institute offers one month preparatory courses for both nautical and engineering students who are eligible for taking certificate of competency examination rules of the state as per Inland vessel and 5 days navigation equipment course.

## Refresher Courses:

The institute offers 5 days refresher course for Masters, Engine Drivers, Civil Engineers and Hydrographic surveyors and 5 days course on repair, maintenance and operation of Inland vessels.





### Course on Dredging:

The Institute conducts training on dredging at two levels a 5 days “Basic Dredging Course” and a 5 days dredger type specific “Advance Dredging Course”. The basic course includes theoretical classes, training on simulator and visit on dredge vessels. The “Advance Dredging Course” being offered for cutter suction dredgers and training is imparted using experts on IHC and Damen Dredgers.

### Simulation Courses for F.G. Officer Personnel:

The Institute has installed world class simulators for providing operational training in use of RADAR, ARPA, ECDIS, DGPS and other Navigation Equipment for handling of Inland and Merchant Vessels and Liquid for cargo handling for oil. The following DG Shipping Approved Courses are conducted:

- RADAR OBSERVERS Simulator Course.
- Automatic RADAR Plotting AID Course.
- Electronic Chart Display and Information Course.
- Ship Maneuvering Simulation Course.
- Liquid Cargo Handling Course (OIL).

### Courses for Armed and Paramilitary Courses:

Personnel from armed forces and paramilitary forces in IWT and flood units routinely used Inland Vessel for rescue for rescue and relief operations during floods. The Institute provides motor boat handling and rescue course for these personnel.

The Institute also offers competency preparatory course for these personnel to obtain licenses/Endorsement under the IV Act.

### Teaching Methodology and Placement:

The teaching methodology at NINI is amalgamation of theory, skill and attitude building, using conventional as well as modern training tools such as computers, multimedia, trainers & simulators. A combination of teacher-supervised and teacher-independent learning activities at the individual and group levels are integrated into the system of learning. Practical training on Inland Vessels, dredgers and visit to terminal are an integral part of the academic program at NINI. The percentage of curriculum time is spread in such a way so as to blend theoretical learning with practical appreciation and experience.

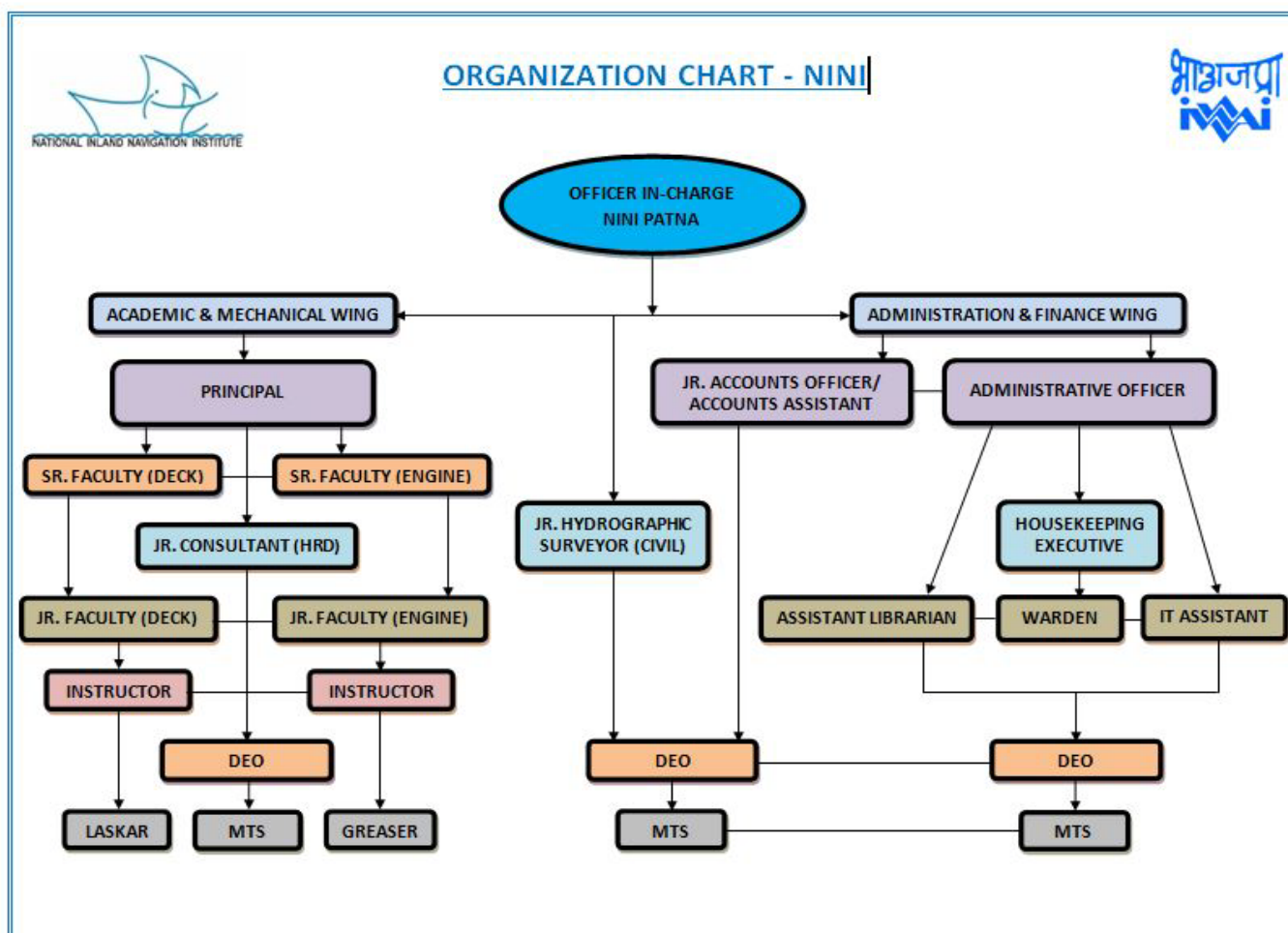


### Faculty:

Faculty is most critical to the training and learning process; the faculties at NINI have vast practical experience on board vessels and have undergone training of trainers and assessors course. The faculty comprises of Master Mariners, Chief Engineers, Inland Vessel Engineers, 1st Class Master and Instructors from Navy. The Institute also invites Domain Experts from the relevant field of courses.

### Placement:

The Institute has a very active placement cell headed by The Principal to assist trainees in getting placement on board Inland Vessels on completion of Induction Training and on obtain a certificate of completion. The Institute has formal association with Merchant Navy Officers Association that assists the cell in placements. In addition our candidates also select various Govt. Department Like; BSF Water Wing, IWAI and Costal Guard.







# NATIONAL INLAND NAVIGATION INSTITUTE

Ministry of Ports, Shipping and Waterways, Govt. of India

West of Mahatma Gandhi Setu, Gaighat, Patna- 800 007

S L	COURSE CALENDAR - 2021	JAN	FEB	MAR	APR	MAY	JUN	JUL	AUG	SEP	OCT	NOV	DEC	DUR	FEES
DG SHIPPING APPROVED COMPETENCY / MODULAR COURSE															
1	NCV (NWKO)				19				16				17	4 Months	16,000
2	Basic STCW Safety Course (PSSR, PST, FPFF, EFA)	01, 15 & 30	13 & 27	13 & 27	14 & 28	13 & 29	14 & 28	13 & 28	11 & 27	10 & 25	12 & 29	16	01 & 16	12 Days	7,000
3	Ship Maneuvering Simulator (SMS)	CONTACT NINI FOR DETAILS												5 Days	25,000
4	Electronic Chart Display Information System (ECDIS)	EVERY MONDAY OF THE MONTH												5 Days	17,000
PROFESSIONAL DEVELOPMENT COURSES (PDC)															
5	Bridge Team Management (BTM) / Bridge Resource Management (BRM)	EVERY MONDAY OF THE MONTH												5 Days	8,000
6	Large Ship Handling Simulator (LSHS)	CONTACT NINI FOR DETAILS												2 Days	8,000
7	Ship Handling Simulator (SHS)													3 Days	10,000
8	Risk Management (RM)													3 Days	8,000
9	Enclosed Space Entry (ESE)													1 Days	3,000
INLAND VESSEL COURSE															
10	Inland Vessel G.P Rating Course	AUGUST (CONTACT NINI FOR DETAILS)												6 Months	13,000 + Hostel
11	Preparatory course for I.V. Engineer & I Class Master	04				03				01				1Month	8,000
12	Preparatory course for I Class Engine Driver & II Class Master		01				01				01			1Month	8,000
13	Preparatory course for II Class Engine Driver & Serang			01				01				01		1Month	8,000
14	Basic Dredging Course for Inland Waterways	CONTACT NINI FOR DETAILS												5 Days	5,000
15	Advance Dredging Course for Inland Waterways													5 Days	8,000
• Seats will be Confirmed only on submission of fee with documents.															
• Please bring original copies of all documents on the first day of the course.															
• The Course fee is not refundable or transferable.															
• Companies may also make block booking.															
• A.C./Non A.C. Rooms on twin sharing basis available at very reasonable rates.															
• Fees are Subject to Change.															
• To book a course seats, please e-mail us at info@niniedu.in or contact at the NINI,															
• For more information please visit us at www.niniedu.in, Ph. No.- 0612 - 2311200-202															



## INLAND WATERWAYS AUTHORITY OF INDIA

(Ministry of Ports, Shipping and Waterways, Govt. of India)

Head Office: A-13, Sector-1, Noida 201301 (U.P)

Tel.: 0120 - 2544036 | Fax: 0120 - 2544009

Web: [www.iwai.nic.in](http://www.iwai.nic.in)



## NATIONAL INLAND NAVIGATION INSTITUTE

(Ministry of Ports, Shipping and Waterways, Govt. of India)

Gaighat, Gulzarbagh, Patna 800007 (Bihar)

Tel. 0612 - 2311200-01-02 | E-mail: [info@niniedu.in](mailto:info@niniedu.in)

Web: [www.niniedu.in](http://www.niniedu.in)